

2021 iQFOIL INTERNATIONAL GAMES



NOTICE OF RACE & SAILING INSTRUCTIONS (NOR/SI)

4th – 9th May, 2021
Split, Croatia

Organising Authority: YC Labud in conjunction with International iQFoil Class Association

1. RULES

- 1.1. The regatta will be governed by the rules as defined in The Racing Rules of Sailing (RRS).
- 1.2. No National prescriptions will apply.
- 1.3. RRS Appendix T – Arbitration – will apply.
- 1.4. Class Racing Policies (CRP) will apply.
- 1.5. In all rules governing this regatta:
 - 1.5.1. [SP] denotes a rule for which a standard penalty may be applied by the race committee or technical committee without a hearing (this changes RRS 63.1 and A5) or a discretionary penalty applied by the International Jury with a hearing;
 - 1.5.2. [NP] denotes a rule that shall not be grounds for protests by a board. This changes RRS 60.1(a).
 - 1.5.3. [DP] denotes a rule for which the penalty is applied according to the RRS Introduction - Notation
- 1.6. If there is a conflict between languages the English text will take precedence.
- 1.7. Decisions on protests concerning class rules: RRS 64.4(a) shall not apply.
- 1.8. For Medal Races, World Sailing Addendum Q, *Umpired Fleet Racing*, will apply and takes precedence over any conflicting instructions.
- 1.9. Decisions of the International Jury will be final as provided in RRS 70.5.

2. [DP] ADVERTISING & SAIL INSIGNIAS & NATIONAL FLAGS

- 2.1. Sails and competitors may be required to carry advertising for event sponsors, which will be supplied by the local organizing committee in accordance with World Sailing Regulation 20 – Advertising Code.
- 2.2. On the sail the event sponsor's branding shall be placed immediately below batten #5 and as close to the leech as possible but without overlapping the sail corner reinforcement. Competitors shall not cut or adapt the stickers in any way.
- 2.3. Competitors shall provide their own self-adhesive National Flags on the sail and any replacements.

3. [DP] [NP] ADDITIONAL IDENTIFICATION

- 3.1. For Fleet identification, the Organizing Authority may supply the event bib vests, the competitors shall wear it while racing.
- 3.2. When the Organizing Authority supplies the ranking coloured bib vests for event leaders (1st, 2nd, 3rd), the competitors shall wear it when they are racing for that day.
- 3.3. Bib vest shall be worn outside other clothing while racing. Competitors shall not deliberately cut or tear them.
- 3.4. When the Organizing Authority supplies the coloured fleet ribbons the competitors shall apply it to the end of the second top batten of the sail or at the top of the mast.

4. ELIGIBILITY AND ENTRY REGULATIONS

- 4.1. All entries shall meet the requirements of World Sailing Regulation 19 – Eligibility Code.
- 4.2. The 2021 iQFOiL International Games shall be open to competitors of all nationalities.

- 4.3. U21 Age division shall be open to all competitors entered in the 2021 iQFOiL International Games but only if that competitor is under 21 years of age on 31 December 2021 (born on 2001 or later).
- 4.4. Events shall run concurrently.
- 4.5. A minimum of five entries is required for each event to constitute a valid series.
- 4.6. The deadline for valid online entries is by 2400hrs (UTC) on **20th April 2021**.
 - 4.6.1. Entries may be accepted after this deadline at the discretion of the International iQFOiL Class Association (ICA).
- 4.7. Competitors shall have a World Sailing Sailor ID before their entry.
- 4.8. A competitor shall be a member of a National Class Association (NCA) or a Member National Authority (MNA) which is a registered member of the International iQFOiL Class Association (ICA). Class membership formalities can be completed at the event venue at registration.
- 4.9. Eligible competitors shall **enter online** with payment in euros by credit/debit card or bank transfer before the entry deadline, unless extended by the ICA.
 - 4.9.1. An entry is not valid until paid.
 - 4.9.2. 50% of entry fees may be refundable if accompanied by a medical certificate issued by a medical doctor stating a valid reason why the competitor cannot compete.
- 4.10. The following documentation will be required at Registration on site:
 - 4.10.1. Proof of valid third-party liability Insurance
 - 4.10.2. Proof of age (passport).
- 4.11. A completed **Parental Permission Form** for entries under the age of 18 years is required. This form may be completed online but a printed copy shall be brought to registration

5. FEES

- 5.1. The Entry Fee is **250** euros.
- 5.2. The Entry Fee paid after **20th April 2021** shall be **280** euros.

6. CAMERAS AND ELECTRONIC EQUIPMENT

- 6.1. **[DP] [NP]** Competitors may be required to carry on their board's cameras, sound equipment or positioning equipment as specified by the Organising Authority. Those competitors competing in the same race that are not issued with such equipment shall carry an equivalent weight in the same position as issued by the Organising Authority.
- 6.2. **[SP]** Competitors shall collect the equipment stated in NOR/SI 6.1 from the Race Office before racing on each day.
- 6.3. **[SP]** On return to shore, competitors shall return the equipment stated in NOR/SI 6.1 to the Race Office within a protest time limit.
- 6.4. **[NP]** Personal Cameras and their attachments may be carried provided that they do not affect the function or use of any existing part of the board or associated equipment.
 - 6.4.1. Any footage or recording is to be made available to the iQFOiL Class Association upon request.
- 6.5. The use of motion pictures by the LOA and the iQFOiL Class Association as referred to in NOR/SI 34.1 also relates to video taken by competitors.

7. NOTICES TO COMPETITORS

- 7.1. Notices to competitors will be posted online on the Official Notice Board at: <https://iqfoilclass.org/ig2021cro>

8. CHANGES TO NOTICE OF RACE & SAILING INSTRUCTIONS

- 8.1. Any change to the Notice of Race & Sailing Instructions is subject to the approval of the Class Course Representative and will be posted no later than 90 minutes before the warning signal of the race on the day it will take effect, except that any change to the schedule of races will be posted by 2000 or by the end of protest time limit (whichever is later) on the day before it will take effect.

9. SIGNALS MADE ASHORE & AFLOAT

- 9.1. Signals made ashore will be displayed at the Official Flagpole.
- 9.2. **[DP] [NP]** When Flag AP is displayed ashore competitors shall not go afloat '1 minute' is replaced with 'not less than 20 minutes' in the race signal AP. This changes RRS Race Signals.
- 9.3. Depending on which format will be sailed (Course Racing, Slalom or Marathon) the RC will display the Format flag (described in the Supplemental SIs) ashore at least 30 minutes before Warning Signal or afloat not later than Warning Signal.

10. [DP] EQUIPMENT REGISTRATION AND INSPECTION

- 10.1. **[NP]** Each competitor shall complete an online Equipment Registration Form (ERF) and submit it before the close of registration. An additional analogue registration system may be used.
- 10.2. Only registered equipment shall be used at this event.
- 10.3. Registered equipment shall not be removed from the venue, the racing area and the waters leading to them, without prior written permission of the Technical Committee.
 - 10.3.1. The venue will be defined and that definition placed on the Official Notice Board.
- 10.4. Equipment may be inspected at any time during the event for compliance with the class rules and the NOR/SI according to the following procedures:
 - 10.4.1. A competitor may be instructed by the Technical Committee, either ashore or on the water, to proceed immediately to the Inspection Area for inspection.
- 10.5. Until permission is given by the Technical Committee, a competitor once instructed to proceed for inspection, shall have no unauthorised contact with any support personnel, no person shall join or leave the board, no equipment or other item shall be taken on or off that board and the board shall not leave the Inspection Area

11. [DP] REPLACEMENT OF EQUIPMENT

- 11.1. Substitution of damaged or lost equipment will not be allowed unless authorised by the Technical Committee.
- 11.2. **Replacement ashore:** Requests for substitution of damaged or lost equipment shall be submitted online on the Event website, for Technical Committee's consideration. Any request shall be made at the first reasonable opportunity.
- 11.3. **Replacement afloat:** When an item of equipment is damaged or lost shortly before a race and is replaced, the competitor shall notify the Technical Committee or Race Committee before the warning signal. As soon as practicable after coming ashore and within the protest time limit, the competitor shall comply with NOR/SI 11.2 and the replaced item shall be presented to the Technical Committee.

12. FORMAT OF RACING

- 12.1. The event consists of an Opening Series (which may include any or all of following formats: Course Racing, Sprint Slalom, Marathon) and a Medal Series. If the event is split into fleets, the Opening Series will be divided into a Qualifying Series and a Final Series. The formats are

described in the Class Racing Policies (CRP).

- 12.2. The intention is to sail all three formats over the course of the event on the basis of wind conditions and forecast and it is at the discretion of Class Course Representative. This is not ground for redress. This changes RRS 62.1(a).
- 12.3. Men and Women shall start separately (except Marathon when they may start together)
- 12.4. Any other division(s) referred to in the NOR/SI will race in the fleets of the main event.

13. SCHEDULE

13.1. Event Schedule:

<u>Date</u>	<u>Day</u>	<u>Times</u>	<u>Event</u>
May 4th	Tuesday	0900-1600 1700 1900	Registration & Equipment Check Coaches/Skippers Meeting Opening ceremony
May 5th	Wednesday	TBC	First possible Warning Signal for Opening series Races
May 6th	Thursday	TBC	Coaches/Skippers Meeting Opening series Races
May 7th	Friday	TBC	Coaches/Skippers Meeting Opening series Races
May 8th	Saturday	TBC	Coaches/Skippers Meeting Opening series Races
May 9th	Sunday	TBC 1600 hrs 1800 hrs	Coaches/Skippers Meeting Opening series Races Last possible warning for the beginning of Medal Series or last Opening series race Prize Giving

- 13.2. A daily schedule will be published on ONB.
- 13.3. 20 (twenty) Opening series races are scheduled.
- 13.4. The maximum races sailed per day for each fleet/division shall be 6 (six).
- 13.5. Qualifying Series shall consist of a maximum of 10 (ten) races and a minimum of 4 (four) races, sailed for a minimum of 2 (two) days or as long as necessary for both fleets to complete 4 (four) races.
- 13.6. Final Series shall consist of a minimum of 2 (two) races before progressing to a Medal Series.
- 13.7. On the last scheduled day of racing no warning signal for the beginning of the Medal Series or the last Opening series race shall be made after 1600 unless after a postponement during a start sequence or a general recall.

14. FLEETS, CLASS FLAGS & COLOURS

- 14.1. The description of Class flags and ribbons will be described in the Supplemental SIs, published on ONB.

15. RACING AREAS

- 15.1. NOR/SI Addendum A shows the Racing area.
- 15.2. The racing area is defined as an area extending 75 meters beyond the entire course in which a competitor would normally sail while racing.
- 15.3. **[DP]** Boards not racing shall avoid the racing area.

16. COURSES

- 16.1. For the Opening Series the courses will be, at the discretion of Class Course Representative, either Trapezoid or Windward-Leeward course, with variations depending on venue specifics, for Course racing, Marathon format, and two-mark, three-mark or four-mark Slalom course for Sprint Slalom format.
- 16.2. For the Medal Series the courses will be, at the discretion of Class Course Representative, either MR1 or MR2 (see NOR/SI 12.9.4 and 12.9.5).
- 16.3. The course or courses to be sailed will be published on the Official Notice Board before the daily skippers meeting. The diagrams will show the order in which marks are to be passed, and the side on which each mark is to be left.
- 16.4. If a gate is either set or replaced by a single mark, it shall be left to port.

17. MARKS

- 17.1. The starting, finishing and rounding or passing marks will be described in the Supplemental SIs, published on ONB.
- 17.2. A vessel that is a mark may not be anchored, but held in place by the use of an engine. This will not be grounds for redress, provided the vessel remains close to her correct position. This changes RRS 62.1(a).

18. THE START

- 18.1. All races will be started by using the following signals: This changes RRS Appendix B rules 26.1 and 26.2.

<i>Minutes before Starting signal</i>	<i>Visual signal</i>	<i>Sound signal</i>	<i>Means</i>
3	Class flag displayed	One	Warning signal
2	U or Black flag displayed	One	Preparatory signal
1	U or Black flag removed	One long	One-minute signal
0	Class flag removed	One	Starting signal

- 18.2. The starting line will be between the staff displaying an orange flag on the race committee vessel and either
 - 18.2.1. The course side of the laid starting mark, or
 - 18.2.2. A staff displaying an orange flag on the race committee pin-boat.
- 18.3. **[DP]** When a starting sequence is in progress, competitors whose warning signal has not been made shall avoid the starting area. The starting area is defined as a rectangle 75 meters from the starting line and marks in all directions.
- 18.4. A competitor starting later than 3 minutes (or 1 minute for Sprint Slalom) after her starting signal will be scored Did Not Start (DNS) without a hearing. This changes RRS A4 and A5.
- 18.5. The warning signal for each succeeding race will be made as soon as practicable after the finish of the previous race.
- 18.6. To alert boards that a race or sequence of races will begin soon, the orange starting line flag will be displayed (with one sound) for at least 2 minutes before a warning signal is made.
- 18.7. When a Green flag is displayed together with the warning signal for course racing format, the boards shall start on starboard tack.
- 18.8. When a Red flag is displayed together with the warning signal for course racing format, the boards shall start on port tack.

19. CHANGE OF THE NEXT LEG OF THE COURSE

- 19.1. To change the next leg of the course, the race committee will move a mark (or move the finishing line)

20. THE FINISH

- 20.1. The finishing line will be between the staff displaying a blue flag on the finishing mark and the course side of the laid mark (or the flag staff on this mark if present) at the other end of the finish line.

21. PENALTY SYSTEM

- 21.1. Penalties for breaches of Class Rules and rules in the NOR/SI marked **[DP]** are at the discretion of the International Jury and may be less than disqualification.
- 21.2. Penalties for breaches of rules in the NOR/SI marked **[SP]** will be 1 (one) point for each infringement applied by Race Committee or Technical Committee without a hearing. The penalty is applied to each race in which the instruction was infringed. However, the Race Committee or Technical Committee may protest a board when they consider the standard penalty to be inappropriate. A board that has been penalized with standard penalty can neither be protested by another board for the same incident nor can another board request redress for this committee action. This changes RRS 60.1, 63.1 and A5.
- 21.3. Failure to comply with NOR/SI 6.2 will result in 1-point penalty for the next race completed even if no race is completed on the day of infringement.
- 21.4. Failure to comply with NOR/SI 6.3 will result in 1-point penalty for the last race completed even if no race is completed on the day of infringement.
- 21.5. Only one 1-point penalty for infringements of NOR/SI 6.2 and/or 6.3 will be applied to any one race.
- 21.6. If Sign-Out / Sign-In system is in use:
- 21.6.1. Failure to Sign-Out will result in 1-point penalty for the next race completed even if no race is completed on the day of the infringement.
- 21.6.2. Failure to Sign-In will result in 1-point penalty for the last race completed even if no race is completed on the day of the infringement.
- 21.6.3. Only one 1-point penalty for infringements of NOR/SI 21.6.1 and/or 21.6.2 will be applied to any one race.
- 21.7. If penalties referred to in NOR/SI 6.2, 6.3, 21.6 are applied by the Race Committee:
- 21.7.1. they will be applied without a hearing. This changes RRS 63.1 and A5.
- 21.7.2. a competitor shall not be scored worse than a disqualified competitor.
- 21.7.3. they will be posted on the Official Notice Board within one hour of the protest time limit.

22. TIME LIMITS AND TARGET TIMES

- 22.1. Time limits and target times are in minutes and as follows:

<i>Opening series</i>	<i>Target Time</i>	<i>Time Limit</i>	<i>Finish Window</i>
Course Racing	15	25	10
Sprint Slalom	3	8	2
Marathon	60	100	30

Medal Series	Target Time	Time Limit	Finish Window
MR1	6	12	4
MR2	3	8	2

22.2. Boards failing to finish within the time stated in the Finish Window, after the first competitor in that group sails the race according to RRS 28, will be scored Did Not Finish (DNF). This changes RRS 35 and A5.

23. PROTESTS AND REQUESTS FOR REDRESS

- 23.1. Hearing request forms are available at the Race Office. Protests and requests for redress or reopening shall be delivered there within the protest time limit.
- 23.2. For Course Racing and Marathon, the protest time limit is 60 minutes after the last competitor has finished the last race of the day for that fleet or when the race committee signals no more racing today, whichever is later.
- 23.3. Notices will be posted within 20 minutes of the protest time limit to inform competitors of hearings in which they are parties or named as witnesses.
- 23.4. Hearings will be held in the Protest Room.
- 23.5. For Sprint Slalom, RRS Appendix B63.6 will apply.
- 23.6. On the last scheduled day of a competitor's Series (Qualification or Final/Opening), a request for reopening a hearing shall be delivered within the protest time limit if the requesting party was informed of the decision on the previous day, or no later than 30 minutes after the requesting party was informed of the decision on that day. This changes RRS 66.2.
- 23.7. On the last scheduled day of a competitor's Series (Qualification or Final/Opening), request for redress from an International Jury decision shall be delivered no later than 30 minutes after the decision was posted. This changes RRS 62.2.

24. SCORING

- 24.1. The Low Point System applies accordance with RRS A4 and B8.
- 24.2. A minimum of 3 races are required for a valid Championship.
- 24.3. Score for the:
 - 24.3.1. Age Division U21 will be extracted from the overall score without recalculation.
- 24.4. A race will be scored as follows:
 - 24.4.1. A Course racing race will be scored as one race in a Series;
 - 24.4.2. A Sprint Slalom round will be scored as one race in a Series;
 - 24.4.3. A Marathon race will be scored as two races. When the fleet is divided in groups, board's finishing position will be divided by the number of groups in the event and applied to each of these two races.

Note: For example, an event of 90 competitors, where fleets have been split into two fleets, and where a board finishes in 70th position, the board's score will be recorded as 35th for both races.

- 24.5. A competitor's series score will be the total of her race scores excluding her worst score(s) as follows:

24.5.1. When racing in a single fleet:

Opening Series Races	Discards	Comments
1-2	0	No discard
3-7	1	One worst score discarded
8-12	2	Two worst scores discarded
13-17	3	Three worst scores discarded
18 or more	4	Four worst scores discarded

24.5.2. When racing in a split fleet

Qualifying Series Races	Discards	Comments
1-2	0	No discard
3-7	1	One worst score discarded in Qualifying Series
8-10	2	Two worst scores discarded in Qualifying Series
Final Series Races	Discards	Comments
1-2	0	No discard
3-7	1	One worst score in Final Series discarded
8 or more	2	Two worst scores in Final Series discarded

- 24.6. To request correction of an alleged error in posted results, a competitor shall complete a Scoring Enquiry Form available at the Race Office.
- 24.7. The scoring abbreviation for a penalty imposed under NOR/SI 21.2 will be SCP.
- 24.8. For Qualification Series, scores are based on the number of competitors assigned to the largest fleet in that Series. This changes RRS A5.2.
- 24.9. If no race in Final Series is completed, the overall ranking in Qualification Series will be established and this shall count as the official result.
- 24.10. If no race in Medal Series is completed, the rankings in Opening Series will be established and this shall count as the official result.
- 24.11. When racing in multiple fleets, competitors assigned to Gold fleet will be ranked higher in the regatta than competitors assigned to Silver fleet and so forth.
- 24.12. Competitors assigned to compete in the Medal Series will be ranked highest in the event except for a competitor disqualified from a Medal Series under RRS 6 or RRS 69.
- 24.12.1. There will be no point scoring in the Medal Series. A board's score in a race will be based on her finishing order in that series.
- 24.12.2. The Medal Series races shall not be excluded neither will the Final races trigger any discards from results in Opening Series.
- 24.12.3. The first 4 (four) ranked boards in the Quarter Final race and the third and fourth overall ranked board from the Opening Series shall advance to the Semi Final. The last 4 boards in the Quarter Final race shall be scored in positions 9th to 12th in the Event. If no Quarter Final is completed, boards will be ranked according to overall scores in Opening Series.
- 24.12.4. The first 2 (two) ranked boards in the Semi Final race and the first and second overall ranked board from the Opening Series shall advance to the Grand Final. The last 4 boards in the Semi Final race shall be scored in positions 5th to 8th in the Event. If no Semi Final is completed, the winner of the Event is the first overall ranked board from Opening series, the second is the second overall ranked board from Opening series and 3rd to 8th place will be ranked according to their positions in Quarter Final.
- 24.12.5. The winner of the Grand Final race is the winner of the Event. The second ranked board shall be scored 2nd place, the third ranked shall be scored 3rd place and the fourth ranked board shall be scored 4th in the Event. If no Grand Final is completed, the winner of the Event is the first overall ranked board from Opening series, the second is the second overall ranked board from Opening series and 3rd and 4th place will be ranked according to their positions in Semi Final.

- 24.13. For those competitors not assigned to the Medal Series and scheduled to the additional Opening Series races as detailed in NOR/SI 13.6.3, the first finisher will be scored 13 points, second 14 points and so on.

25. [DP] [NP] SAFETY REGULATIONS

- 25.1. A competitor that retires from a race shall notify the Race Committee as soon as possible and shall complete a Retirement Declaration Form, available from the Race Office, within the protest time limit.
- 25.2. Competitors not racing for any of the racing days shall inform the Race Office.
- 25.3. [SP] Sign-out/Sign-in system may be used. The procedure will be described in the Supplemental SIs, published on ONB.

26. LOCATIONS OF IMPORTANCE

- 26.1. The Location of importance will be described in the Supplemental SIs, published on ONB.

27. OFFICIAL BOATS

- 27.1. The identification of the Official boats will be described in the Supplemental SIs, published on ONB.
- 27.2. Actions by the official boats or helicopters or drones shall not be grounds for redress by a board. This changes RRS 60.1(b).

28. [DP] SUPPORT BOATS

- 28.1. Support Persons shall comply with the Support Boat Regulations. See NOR/SI Addendum B.
- 28.2. Support Persons may **register online** with payment by credit/debit card or bank transfer. Payment made at the event venue at registration shall be in cash and euros only.
- 28.3. The Support Person's Fee for registration is **50 euros**.
- 28.4. A registration is not valid until paid.
- 28.5. The following documentation shall be brought to the event Race Office before the First Race:
- 28.5.1. Proof of valid third-party liability Insurance.
 - 28.5.2. Boat driving license (if applicable).

29. [DP] TRASH DISPOSAL

- 29.1. Trash may be placed aboard support and Committee boats.

30. [DP] RADIO COMMUNICATION

- 30.1. While on the water, a competitor shall not carry equipment capable of making radio transmissions or receiving radio communications, except for equipment provided by the Organising Authority. This restriction also applies to mobile telephones.
- 30.2. For purposes of safety, support boats may monitor the Race Committee working channel, but cannot transmit on this channel except in the case of an emergency.

31. PRIZES

- 31.1. Medals for the 2021 iQFOiL International Games will be awarded to the first 3 (three) Men and Women and the trophies/prizes to the first 5 (five) Men and Women events.
- 31.2. Trophies/prizes for the U21 fleet will be awarded to the first 3 (three) Men and Women in each age division.

31.3. Other prizes may be awarded at the discretion of the iQFOiL Class Administration.

32. DISCLAIMER OF LIABILITY

32.1. Rule 4 of the RRS states: “The responsibility for a board’s decision to participate in a race or to continue to race is hers alone.” Sailing is by its nature an unpredictable sport and therefore inherently involves an element of risk. By taking part in the event, each competitor agrees and acknowledges that:

32.1.1. They are aware of the inherent element of risk involved in the sport and accept responsibility for the exposure of themselves and their board to such inherent risk whilst taking part in the event;

32.1.2. They are responsible for the safety of themselves and their board and their other property whether afloat or ashore;

32.1.3. They accept responsibility for any injury, damage or loss to the extent caused by their own actions or omissions;

32.1.4. Their board is in good order, equipped to sail in the event and they are fit to participate;

32.1.5. The provision of a race management team, patrol boats and other officials and volunteers by the race organizer does not relieve them of their own responsibilities;

32.1.6. The provision of patrol boat cover is limited to such assistance, particularly in extreme weather conditions, as can be practically provided in the circumstances;

32.1.7. The fact that the Race Committee or Technical Committee conducts inspections, or not, of a boat does not reduce the responsibilities of each competitor set out in this NOR/SI.

33. INSURANCE

33.1. Each participating competitor shall be insured with valid third-party liability insurance with a minimum cover of €1,000,000 per event or the equivalent.

33.2. Support boat drivers shall also have valid third-party liability insurance with a minimum cover of €1,500,000 per event or the equivalent.

34. TELEVISION AND MEDIA

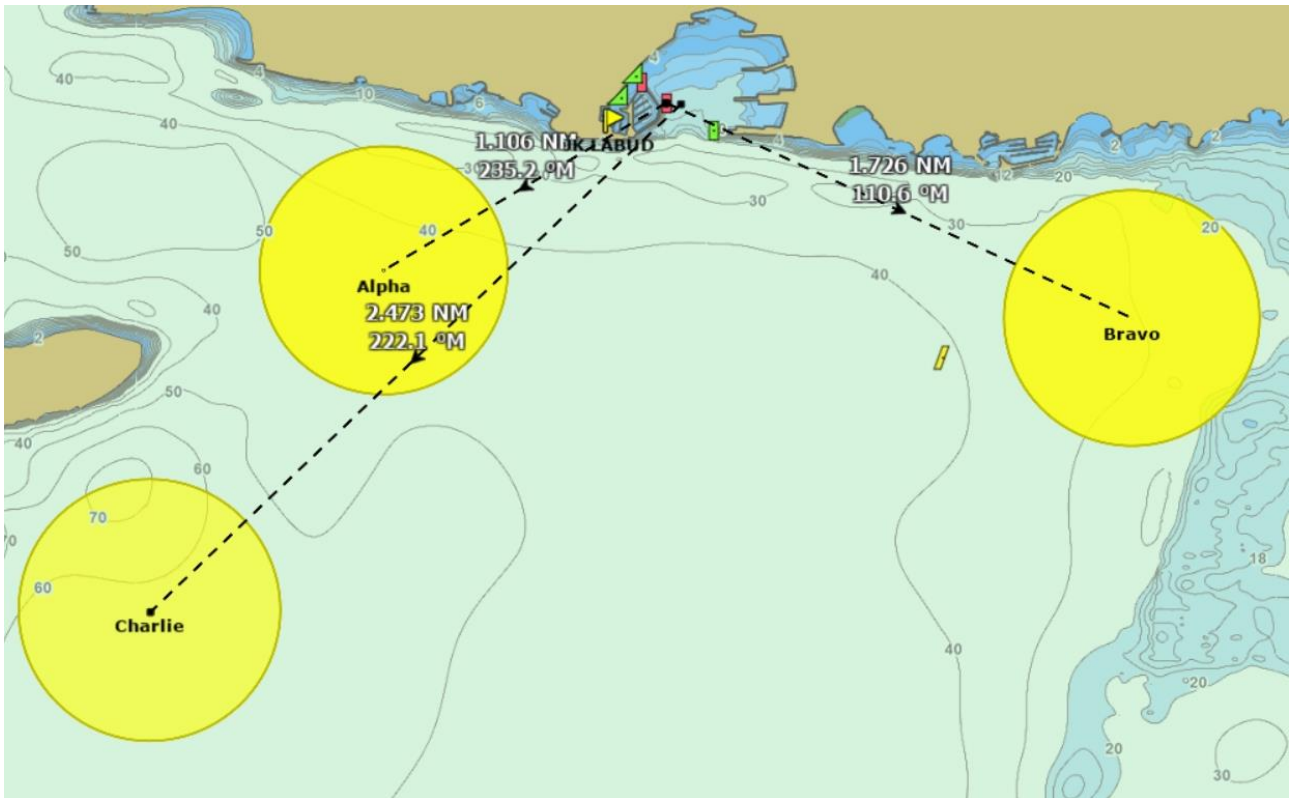
34.1. In registering for the event, competitors automatically grant to the LOA and the iQFOiL Class Association the right in perpetuity to make, use and show from time to time at their discretion, any motion pictures, still pictures and live, taped or filmed television and other reproductions of them, taken during the period of the event as defined in the NOR/SI in which he/she participates, without compensation.

35. OFFICIAL CEREMONIES AND DRESS CODE

35.1. Competitors should attend the Opening Ceremony, Prize Giving and Closing Ceremony, if held.

35.2. Smart casual clothes shall be worn.

ADDENDUM A – CHART SHOWING RACING AREA



ADDENDUM B – SUPPORT BOAT REGULATIONS

1. GENERAL

- 1.1. This Support Boat Regulations (SBR) shall apply from 1000 on Tuesday, 4th May until 1900 on Sunday, 9th May 2021.
- 1.2. For the purposes of these regulations, a support boat includes any boat that is under the control or direction of a person who is or may provide physical or advisory support to an athlete, including the gathering of data that may be used at a later time.
- 1.3. The Organizing Authority may inspect boats at any time to ensure that they comply with these regulations, and the person responsible for the boat shall facilitate such inspection.
- 1.4. An alleged breach of any of these regulations may be referred to the International Jury for a hearing. As a result of the hearing, the International Jury may instruct the Organizing Authority to withdraw accreditation and access rights from the offending party, with or without the option of substitution, either for a specified period or for the remainder of the competition.
- 1.5. The Organizing Authority may change these regulations at any time. Any changes will be posted on the Official Notice Board.
- 1.6. Support boats and designated drivers shall be registered at the Regatta Office either before leaving the venue by water for the first time or by 18:00 on the day before the first race of a competitor that it is supporting, whichever is earlier.
- 1.7. Each boat shall be insured with valid third-party liability insurance with a minimum coverage of € 1,500,000 euro (or equivalent) per incident.
- 1.8. Only the registered person may be a designated driver.
- 1.9. The person registering the support boat shall sign to confirm that:
 - 1.9.1. he / she holds a valid insurance certificate showing proof of third-party liability coverage as required by SBR 1.7;
 - 1.9.2. the designated driver has a motorboat driving license recognized by a national authority appropriate to that boat;
 - 1.9.3. anyone who will be using a radio has an appropriate radio operation license recognized by a national authority.
- 1.10. Support boats shall be marked as follows:
 - 1.10.1. The three-letter NOC code shall be clearly displayed on both sides of the boat in strongly contrasting colours at all times while afloat;
 - 1.10.2. The minimum height for the letters shall be 200mm. The letters will not be provided by the Organizing Authority.

2. SAILING VENUE

- 2.1. Support boats shall use the designated slipway/area for launching. Once launched, trailers shall be moved immediately to the trailer park or as otherwise directed by the Organizing Authority.
- 2.2. Only support boats that will be registered will be allowed into the sailing venue.
- 2.3. When not in use, support boats shall be appropriately berthed at the sailing venue in the allocated areas for support boats for the entire time that these SBR apply.

3. SAFETY

- 3.1. Support boats shall carry on board:
 - 3.1.1. Life jackets / buoyancy aid for all passengers and the driver (it is recommended that they are worn at all times when afloat);

- 3.1.2. First-aid kit;
- 3.1.3. VHF radio;
- 3.1.4. Device for making a sound signal;
- 3.1.5. Compass;
- 3.1.6. Adequate anchor and tackle for conditions and depth;
- 3.1.7. Tow rope (minimum 15m long and 10mm thick);
- 3.1.8. Operational engine kill cord (also known as a safety lanyard or automatic engine immobilizer);
- 3.1.9. Knife.
- 3.2. It is strongly recommended that the kill cord be used at all times when the engine is running.
- 3.3. Team leaders are responsible for overseeing the safety of their support boats on the water, including knowledge of who is afloat and ensuring their safe return to the venue.
- 3.4. At all times, the registered driver(s) of a support boat shall comply with directions given by a Race Official. In particular, this includes assisting in rescue operations when requested to do so.

4. GENERAL RESTRICTIONS

- 4.1. The registered driver(s) of a support boat will be responsible for the control of the boat at all times and will be held responsible for any inappropriate behaviour, dangerous actions or improper practices, or actions affecting the fairness or safety of competition.
- 4.2. Support boats shall not leave any device, piece of equipment, buoy, marker or similar item permanently in the water. Temporary use of floating objects is allowed for current measurement. These objects shall be removed as soon as the measurement has been taken.
- 4.3. Support boats should take particular care to minimize their wash when transiting the course areas.

5. SUPPORT BOAT ZONE

- 5.1. Support Boats shall not be positioned:
 - 5.1.1. Closer than 75 meters of any board racing;
 - 5.1.2. Within 75 meters of the starting line and marks from the time of the preparatory signal until all boards have left the starting area, or the race committee signals a postponement, general recall or abandonment;
 - 5.1.3. Between any board racing and the next mark of the course;
 - 5.1.4. Between the inner and outer trapezoid courses when boards are racing on both courses;
 - 5.1.5. Within 75 meters of any mark of the course while boards are in the vicinity of that mark;
 - 5.1.6. Within 75 meters of the finishing line and marks while boards are finishing.
- 5.2. In addition, support boats that are motoring above 5 knots shall remain at least 150 meters from any board racing.